



**TRENCHING & SHORING**

**Single Acting Frame Technical Data Sheet**

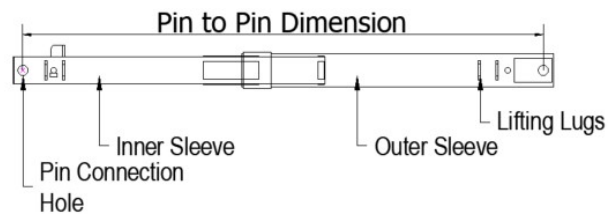
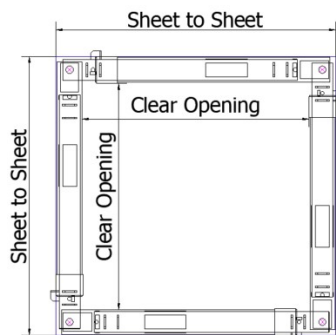
This technical data sheet is intended to provide basic information for users of the GAP Group Single Acting Frames and draw the client’s attention to the aspect of Single Acting Assembly, weight, size, planning and lifting operations and installation which need to be considered in compiling method statements.

GAP’s Single Acting Frame is intended to be used as a temporary waling system to a sheeted excavation and it is not intended to be used for other purposes. This frame has a 4-way hydraulic adjustment to suit the required plan dimensions.

The working load capacity of the Single Acting Frame ranges between **9.5kN/m to 35kN/m** and an axial load of **50kN**.

The Single Acting Frame can be span between **2.0m (minimum) and 4.0m (maximum)**.

**Component Identification, Range, Dimension and Weight:**



Leg Type	Clear Opening (Minimum)	Clear Opening (Maximum)	Sheet to Sheet (Minimum)	Sheet to Sheet (Maximum)	Beam Width	Weight Per Leg
Type A	1860mm	2860mm	2000mm	3000mm	140mm	81kg
Type B	2860mm	3860mm	3000mm	4000mm	140mm	98kg

## Plant & Lifting

A suitable appliance is required for off-loading and installation. For off-loading, there needs to be sufficient clearance under the main hook to allow lifting with a safe angle between the lifting slings. If the legs are not lifted into the excavation, then the appliance should be located a safe distance from the edge of the excavation and the lifts, and the radii checked against the safe lifting capabilities of the appliance.

## Assembly

To assemble the frame, only the corners need to be connected using a **32mm** diameter pin complete with spring retention clip as supplied. The legs should be as level as possible during assembly to make it easier to assemble the joint.



## Handling

The manhole brace should only be lifted with a suitable 4-leg lifting chain. N.B. DO NOT under any circumstances attempt to lift the manhole braces with the hanging chains supplied as they are only designed to act as a safety back up support in the unlikely event of a hydraulic ram failure.

## Frame Adjustment

Manhole braces incorporate a Single acting hydraulic ram which allows full hydraulic adjustment of the frame over the full range of the legs, i.e., 1000mm. the rams are extended and retracted by using the hydraulic hand pump and hoses supplied.

