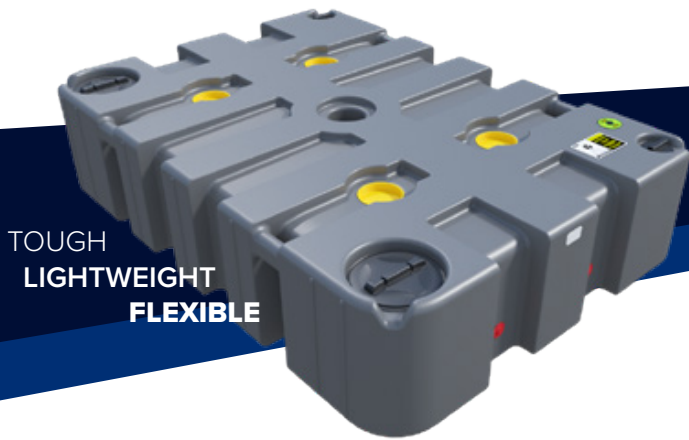


TUFF TANK - PLASTIC EFFLUENT TANK



TOUGH
LIGHTWEIGHT
FLEXIBLE

So much better than any steel tank

If you have been struggling to deliver heavy, steel waste tanks with specialist equipment, it's high time you switched to our robust, lightweight plastic waste tank. Easy to clean and not prone to unsightly rust the Tuff Tank is the long-term, clear product of choice for your liquid waste. Deliver and position the Tuff Tank with far less effort than a steel tank.

Available in 500 gallon.



TT-500

TT-750

TT-1000

TECHNICAL ADVANTAGES

- Built in lifting handles and sling points
- Individual, non-removable serial number for traceability
- Non-removable, high contrast instructions and warning signs (In-mould graphic is permanent)
- Sloped upper surfaces to drain off rainwater
- Sealed access ports protect against spillage and odour
- Increase volume by linking several tanks together to extend the period between waste pump outs
- Linkable in two directions: side-to-side; nose-to-tail
- Stackable, rust-free, hygienic - flexibility guaranteed

APPLICATIONS

- Construction sites
- Events
- Campsites / pleasure boat toilet waste tipping points
- Wherever there is no mains sewer connection

UPGRADE KITS

- Side-to-side link kit
- Nose-to-tail link kits (various lengths)
- Cost-effective level monitoring alarms - allows office-based waste level monitoring and warns you when tank needs emptying



LINKING KITS



LEVEL ALARM



SIMPLE LOGISTICS

0333 202 0711

Welfare@gap-group.co.uk

Technical Details*

Tuff Tank - the first, and still the best.

Details	TT-500	TT-750	TT-1000
Volume (Litres / Gallons)	2,273 / 500	3,410 / 750	4,546 / 1,000
Length (mm)	3,000 mm		
Width (mm)	2,100 mm		
Height (mm) - see Note 1	485 mm	690 mm	900 mm
Dry Weight (KG) - ONLY MOVE, LIFT OR STACK WHEN EMPTY	140 KG	180 KG	220 KG
Wet Weight (KG)	2,413 KG	3,590 KG	4,766 KG
Flush capacity (@ 4 litre cistern flush)	567 flushes	854 flushes	1,138 flushes
Flush capacity (@ 6 litre cistern flush)	378 flushes	569 flushes	758 flushes
Shower capacity (@ 40 litres/shower) - see Note 2	57 showers	85 showers	114 showers
Elsan® Cartridge Empties (@ 12 litre chamber) - see Note 3	189 empties	284 empties	379 empties
Elsan® Cartridge Empties (@ 15 litre chamber)	151 empties	227 empties	303 empties
Elsan® Cartridge Empties (@ 21 litre chamber)	108 empties	162 empties	216 empties
High Level Alarm available	For all tanks		
Alarm (when fitted) notification at	1,929 litres	2,904 litres	3,870 litres
Linking Kits available	Side-to-side or nose-to-tail - for all tanks		
Standard Colour	Dark Grey	Further colours on request	
	Further Details:		
Note 1: Please allow clearance above tank for connecting inlet pipework e.g. 110mm	2 Ø 5" / 125mm inlet hatches with screw cap and tether		
Note 2: Average shower duration is 5 to 8 minutes @ 8 litres flow per minute	2 x Ø 12" / 300mm extraction hatches with screw cap and tether		
Note 3: Each user will create 1.5 to 2 litres of toilet waste per day	4 x inbuilt lifting handles and sling guides		
	Deep forklift slots		
	Transportable and stackable when empty - flat or long edges		

***Please note:** tank sizes quoted are subject to a +/-3% variation. We reserve the right to amend the technical specification to improve the product without prior notification. Units are subject to availability.

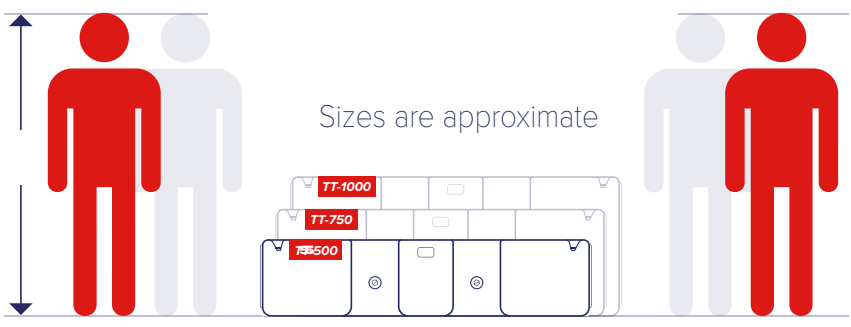
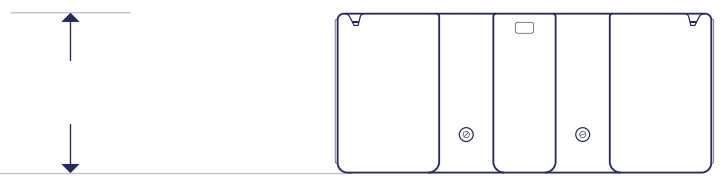
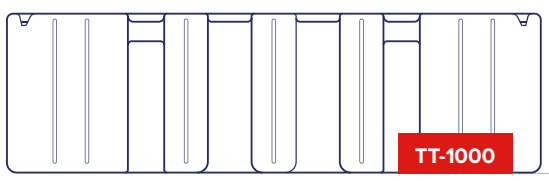
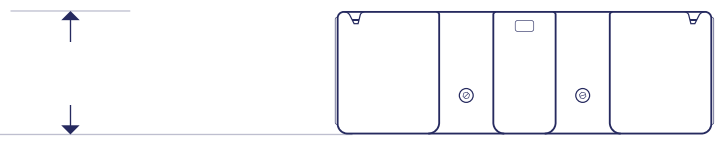
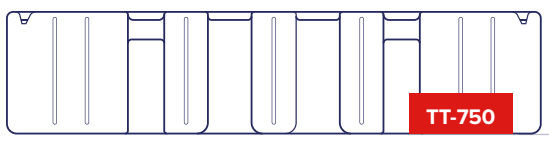
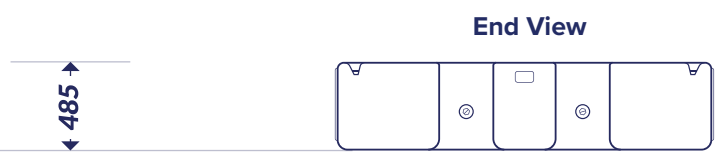
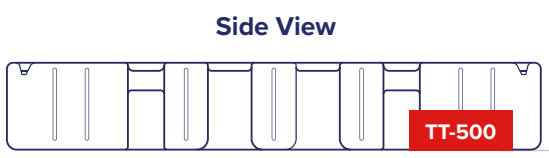
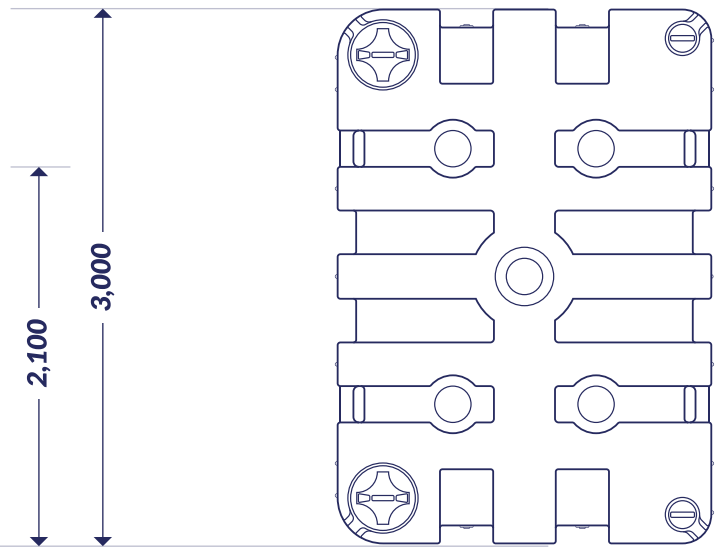
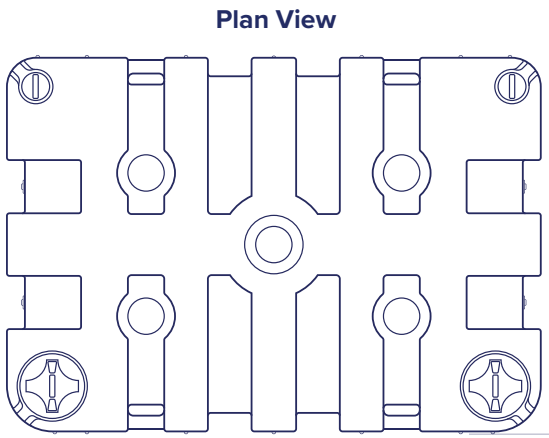
0333 202 0711

Welfare@gap-group.co.uk

TUFF TANK - PLASTIC EFFLUENT TANK

Dimensions (mm)

Please note: tank sizes quoted are subject to a +/-3% variation.



Contact us for information

0333 202 0711

Welfare@gap-group.co.uk