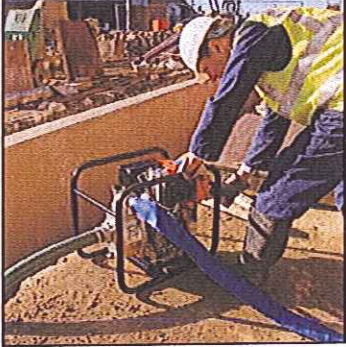


TE-RD

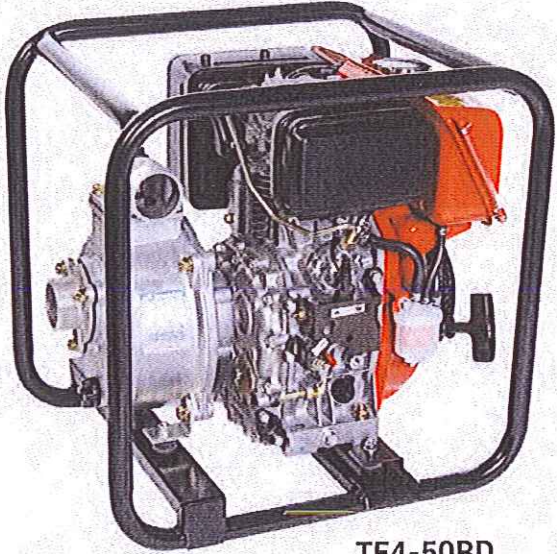
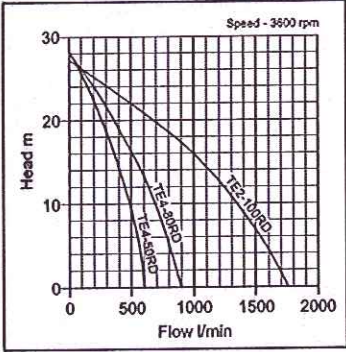


CENTRIFUGAL - SITE WATER

- Hire fleets
- Construction
- Utilities
- Drainage
- Flood defence
- Transfer



TE series self-priming centrifugal, drainage pumps are powered by compact Subaru-Robin diesel engines. They have carbon ceramic mechanical seals, aluminium pump housings, and, for increased abrasion resistance, have cast iron volutes and impellers. These materials ensure maximum durability for the pumping of clear and black water as found on building sites. All models are housed within a protective tubular steel, easy carry frame. Maximum suction lift is 8 metres, however 6 metres, or less, is recommended. They perform the same duties as petrol pumps, but enjoy the economies of diesel fuel without the bulk of the traditional engine design. Hose couplings, washers, clips and strainers are supplied with all pumps, but hoses are extra. To assist manual handling, a two wheeled trolley is available as an optional extra.



TE4-50RD



TE4-80RD with trolley

model	inlet (mm)	outlets (mm)	engine	fuel	HP	flow (l/min)	head (mtrs)	solids (mm)	w x l x h (mm)	dry weight (kgs)	packing weight (kgs)
TE4-50RD	50	50	DY23-2D	diesel	4.8	600	28	7	410x505x495	40	44
TE4-80RD	80	80	DY23-2D	diesel	4.8	900	28	7	410x590x510	42	47
TE2-100RD	100	100	DY27-2D	diesel	5.5	1750	27	7	410x680x590	50	55
optional extra: site trolley										12.4	12.4